



# PLEIX-QUIP



Africa (Pty)Ltd

## ELECTRIC ACTUATOR SA Series

- Designed for small quarter-turn applications. This actuator can also automate valves requiring up to 360-degrees rotation.
- Engineered to be lightweight and compact for greater versatility.
- The unique housing design allows various options to be installed without the additional cost of an external enclosure.
- 4-LED lights are located inside the high impact dome indicator. When the actuator reaches the full open or full close position, the dome lights will illuminate and allow added visibility over a greater distance or in low light areas.
- To help protect the components and extend the actuator's life, a 2-watt anti-condensation heater is included as standard.
- Included with the end of travel motor switches are two additional dry-contacts for auxiliary indication.
- A thermal protector is provided to protect the motor from over-heating.
- The worm gear drive eliminates the possibility of back drive and the need for motor brakes.
- Designed for mounting in any orientation.
- In case of a power loss, the manual over-ride is provided for positioning the valve.
- 3 ISO mounting pads are provided for greater flexibility.

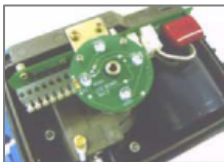


SA-05

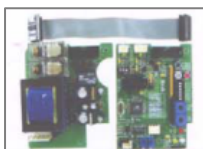
SA-05L

### PERFORMANCE

MODEL	OUTPUT TORQUE		OPERATING TIME (90 °)		MOTOR CLASS ( E )	RATED CURRENT (mA)				DUTY CYCLE	NUMBER OF HANDLE TURNS	WEIGHT
	Kg.m	N.m	60hZ	50hZ		w	1 PHASE (AC)					
					24V		110V	230V	24V	S2(%)	Kg	
SA-05	5	50	14	17	6	1.8	0.35	0.23	1.8	75	6	2.8
SA-05L	5	50	14	17	6	1.8	0.35	0.23	1.8	75	6	3.2



LED LIGHT



P.C.U

### OPTION

		SA-05	SA-05L
P.I.U	Potentiometer Unit (1k-0hm)	●	●
C.P.T	Current Position Transmitter Output DC 4-20mA		●
P.C.U	Proportional control Unit Input: DC 4-20mA, 2-10V Output DC 4-20mA		●
L.C.U	Local Control Unit		●



127 Lemmer Road, Vulcania Ext. 2, Brakpan, RSA  
 PO Box 10270, Dalview 1544  
 Phone: +27 11 736 4994 Fax: +27 11 736 6130  
 Email: [pleixquip@pleixquip.co.za](mailto:pleixquip@pleixquip.co.za)  
 Website: [www.pleixquip.co.za](http://www.pleixquip.co.za)



# PLEIX-QUIP

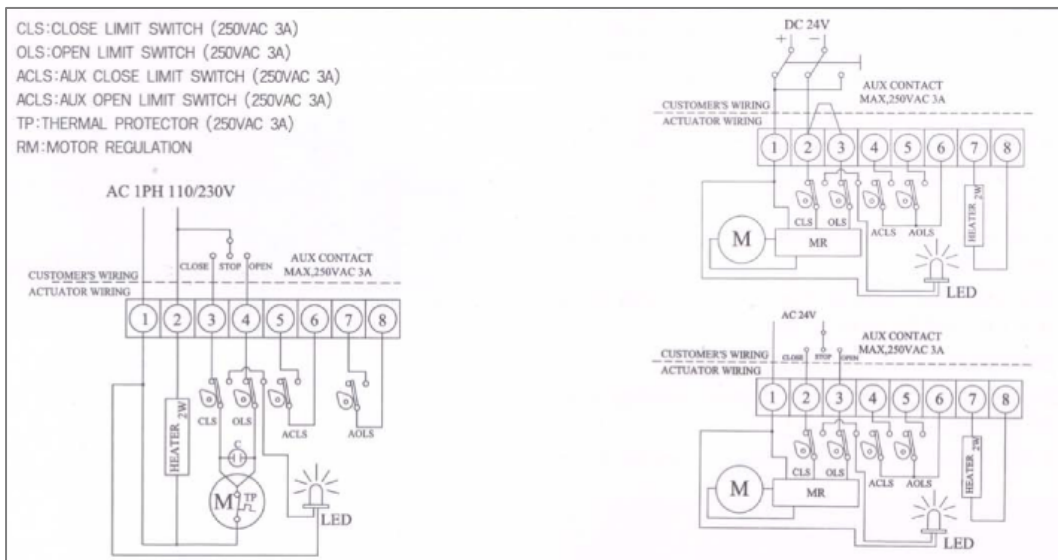


Africa (Pty)Ltd

## STANDARD SPECIFICATION

Indicator	Dome type (LED light inside)	Enclosure	Weatherproof enclosure IP68 Nema 4and6
Ambient temperature	-20° C to 70° C	Power supply	AC110/230V 1 PH + 10% 50/60Hz, DC 24(AC24V)
Limit switches	2 Open/Close + Dry contact2 Open/close	Travel angle	90° ± 5° (extension: up to 360° )
Manual operation	By L-wrench (6mm hexagon)	Self locking	Provided by means of worm gearing
Space heater	2W(110/230VAC,24VDC)	Conduit entries	Tow PF1/2" (option:PG13.5, NPT1/2")
Lubrication	Greasy moly (EP type)	Materials	Steel, aluminium alloy, bronze
Surface Treatment	Anodizing	External coating	Polyester (TGIC-free)

## STANDARD WIRING



## DIMENSION

SA-05	SA-05L	BASE
		<p>※ OPTION</p> <p>BASE B.C.D</p> <p>ISO 5211 F03( ∅ 36 M5TAP DP8)          ISO 5211 F05( ∅ 50 M6TAP DP10)          ISO 5211 F07( ∅ 70 M8TAP DP13)          ※ISO 5211 F04( ∅ 42 M5TAP)</p>

127 Lemmer Road, Vulcania Ext. 2, Brakpan, RSA  
 PO Box 10270, Dalview 1544  
 Phone: +27 11 736 4994 Fax: +27 11 736 6130  
 Email: [pleixquip@pleixquip.co.za](mailto:pleixquip@pleixquip.co.za)  
 Website: [www.pleixquip.co.za](http://www.pleixquip.co.za)